

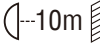




DRAGON 1600-W BWSF

Model: PR-6517

RoHS | CE |  |  |  |  | T_c:70°C | T_a:45°C | 

Version: 20260604

Moving Heads



DRAGON 1600-W BWSF(four in one) is an underwater fixture with Beam, Spot, Framing and Wash functions using a 700W white LED engine as its light source, the 1st product of the industry and filling a market gap. It is very powerful, energy saving and environmentally friendly with high illuminance, silent operation, compact size, long lifespan, low luminous decay and efficient cooling. Designed to meet very intensive beam requirements for underwater operation, it has a beam angle from 5° to 60° with CMY, CTO, color wheel, rotating gobos, full curtain function by framing blades, 360° continually rotating framing module, prism, frost filter and other functions.

IP68, BWSF 

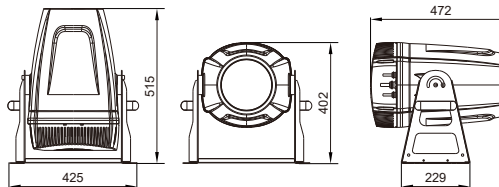
Rotating gobos(Ø24mm, image Ø18mm)



Color wheel



Fixed gobos



23Kg 
Size(mm)

Specifications

- Input voltage
100V~240V AC, 50/60Hz
- Power consumption
800W @ 220V
- Light sources
700W, White LED module (8000K, >12000hrs)
CRI : Ra ≥ 70(Optional high CRI version Ra ≥ 96, R9 ≥ 95)
- Colors
CMY color mixing system with macros
1 Color wheel: 7colors+ Open,
Half color, bi-directional rainbow effect at variable speeds,
Stepping/linear color changing
- CTO
Linear CTO system(0-100%, 1800K-6500K)
- Framing
1 Framing Module: 4 Framing Blades
Framing Module continual(360°) rotation with many graphics
of different sizes and shapes
4 Framing blades to make full curtain effect
- Gobo wheels
1 Rotating gobo wheel: 8Rotating Gobos +Open
Bi-directionally rotatable, and shakable at variable speeds
1 fixed gobo wheel(optional):4 fixed Gobos + Open
Bi-directionally rotatable, and shakable at variable speeds
- Effect wheel
Bi-directional rotation at variable speeds
- Iris
5-100% linear with macros
- Prism
1pc, 3-facet circular prism, bi-directional rotation at variable
speeds with indexing function
- Frost
1 frost filter
0-100% linear
- Beam angle
5° ~ 60°, linear with 16 bit control
- Focus
DMX linear with auto focus function
- Dimmer
Linear electronic dimmer 0-100% with 16 bit control
3 dimmer speeds
5 dimmer curves
Dimmer frequency(1.2K-25K) good for 4K high speed video
camera
- Strobe
Electronic strobe 0.3~25 Hz
optional pulse, synchronized or non-synchronized strobe at
slow, medium and fast speeds
- Head movement
Tilt ±100°
- Advanced macros
Color temperature macros:
optional 2700K,3000K,3500K,4000K,4500K,5000K,5700K
Standard color macros:
89 color options based on standard color chart.
- Brightness calibration function
With brightness calibration function to calibrate initial
brightness for a single fixture or multiple ones and store
brightness values into the fixtures
- CRI mode
Running at high CRI mode via DMX channel to ensure high
CRI optical effect.
- Control
International standard DMX512 signal and RDM function
32channels in short mode, 38channels in standard
mode, 51channel in extended mode
Master/Slave mode
Standalone mode
Master Mode

- Control
DMX512 ports (5-pin)
- Other functions
Modular construction for easy maintenance,
DMX channel voltages monitoring
Firmware upgrade via DMX cable
- Housing
High temperature, fire and corrosion resistant ABS or stainless
steel, IP68, installed underwater with depth up to 5m
- Ambient temperature
Temperature at maximum 45°C
- Weight
Net weight of the fixture 23KG
Net weight of the power supply box 7KG
- Light Output

